



SAINT LOUIS **BALLET**

SWAN  
LAKE



SPRINGFIELD SYMPHONY ORCHESTRA

Touhill Performing Arts Center  
April 28-30, 2023

# **You Made This Happen!**

You made it possible for us to add the Springfield Symphony Orchestra's gorgeous live music to this performance, and we couldn't be more grateful.

We hope to realize our vision of live music at next year's productions.



**DONATE HERE**

Give Annually. Give Monthly. Tribute Gifts. Corporate Matching Gifts.



SLB Dancer Ethan Maszer  
in "By Any Other Name",  
Photo by Kelly Pratt

# SAINT LOUIS **BALLET**

## **EXECUTIVE AND ARTISTIC DIRECTOR**

**Gen Horiuchi**

## **THE COMPANY**

Mark David Bloodgood, Michael Burke, Lauren Christensen,  
Rebecca Cornett, Amy Herchenroether,  
Matthew Rusk, Lori Wilson

Colin Ellis, Emily Fugett, Rachel Harrison, Lauren Kot,  
Sean Sessions, Roxy Shackelford

Olivia Cornelius, Charles Cronenwett, Abby Hannuksela,  
Julia Heiss, Ethan Maszer, Zoe Middleton, Elaine Rand, Fletcher Weld

### **Rehearsal Director**

CiCi Houston Sudholt

### **Assistant Rehearsal Director**

Christine Settembrino

### **Guest Rehearsal Director**

Ellen Costanza

### **Teaching Associates**

Donna Patzius, Lisa Wolfsberger

### **Founders**

Antoni Zalewski and Ludmila Dokoudovsky

*Special thanks to the following season sponsors:*



Cover Photo: SLB Dancer Amy Herchenroether, Photo by Kelly Pratt

# SAINT LOUIS **BALLET** SCHOOL

## SUMMER 2023



### **STORYBOOK BALLET CAMPS**

Ages 3-4 & Ages 5-6

**THE NUTCRACKER**  
**ENCANTO**  
**CINDERELLA**  
**FROZEN**  
**LITTLE MERMAID**

### **SUMMER BALLET & DANCE PROGRAM**

Ages 7-9, 10-13, 14-21

Offering  
Up To 5 Weeks!  
June 19–July 21

ballet (daily) | pointe | variations | jazz  
contemporary | ballroom | pilates  
conditioning | hip hop | musical theater

*\*classes vary per week*



**REGISTER TODAY!**  
**STLOUISBALLET.ORG/ALLSUMMER**  
**(636) 537-1998**

# THE DIRECTOR



## **GEN HORIUCHI**

Executive and Artistic Director

Gen Horiuchi, originally from Tokyo, Japan, moved to the United States after winning the Prix de Lausanne, the international ballet competition in Switzerland in 1980, and receiving a scholarship to study at the School of American Ballet. In 1982, the great George Balanchine invited him to join the New York City Ballet, where he became a principal dancer in 1989. He performed many ballets with the renowned company; Balanchine created the role of Mercury in the ballet *Perséphone* especially for him. Peter Martins, ballet master-in-chief, created ballets *Eight More* and *Les Gentilhommes* for Horiuchi as well.

Gen Horiuchi's Broadway musical credits include Andrew Lloyd Webber's *Song and Dance* and the role of Mr. Mistoffelees in *Cats*. He went on to perform that role in London's production of *Cats* and became the first performer to play the lead on both Broadway and in the West End in 1998. That same year, he choreographed the magnificent Opening Ceremony of the Winter Olympics in Nagano, Japan.

Horiuchi became Executive and Artistic Director of Saint Louis Ballet in 2000 and created more than 20 original works including seven full-length ballets for the company.

In 2010, he founded "Ballet for the Future" which tours Japan's major cities each summer with a company of professional ballet dancers. In 2016, the Japanese Ministry of Education, Culture, Sports, Science and Technology awarded Horiuchi the prestigious Art Encouragement Prize in recognition of his work with "Ballet for the Future."

SATURDAY, MAY 13th  
THE CHASE PARK PLAZA



SAINT LOUIS **BALLET**

**EN POINTE**

— GALA 2023 —

*raise the barre*



HONORING  
BLANCHE TOUHILL





## **SYNOPSIS**

### **Prologue:**

A young Prince Siegfried is playing with a friend outside the house. It is young girl named Princess Odette. As they play he runs to fetch his mother so she can join in the fun. Suddenly an evil sorcerer named Von Rothbart appears and captures the young Princess Odette. Prince Siegfried returns with his mother and witnesses her being captured by Von Rothbart. He tries to enlist his mother for help, but she did not see what had just happened. Prince Siegfried stands helpless as his friend is taken away into the woods.

### **Act 1: Scene 1- A magnificent garden before a castle**

Years later, at a garden near the castle, peasants and children await for the visit of courtiers from the royal court. The Tutor and Prince Siegfried, now heir to the kingdom, join the festivities. Later, the Queen passes through and gives her son, Prince Siegfried, a crossbow as a gift and reminds him that he will need to choose a wife at the upcoming ball celebrating his birthday. Upset that he cannot marry for love, Siegfried escapes into the forest. Later that night in the forest he sees a flock of swans flying overhead and sets off in pursuit.

### **Act 1: Scene 2 – Lakeside**

Siegfried aims his crossbow at the swans and readies himself for their landing by the lakeside. When one comes into view, however, he stops. Before him is a beautiful creature dressed in white feathers, more woman than swan. The two dance together and Siegfried realizes she is the Princess Odette who had been captured by Von Rothbart years earlier. A retinue of other captured swan-maidens join Odette in the environs of Swan Lake. Siegfried takes great pity. As they dance, he falls in love with Odette. Siegfried promises to Odette that he will swear his eternal love to her at the upcoming birthday ball—an act that will render the sorcerer's spell powerless.

### **Act 2 – An opulent hall in the castle**

The Prince returns to the castle to attend the ball. Four Princesses arrive in hopes of being chosen as his wife. Among the guests who hail from Italy, Russia and Hungary, Von Rothbart arrives in disguise with his own daughter Princess Odile, the Black Swan. She appears identical to Odette. The Prince dances with her, mistakes her identify for Odette, and proclaims to the court that he swears to make her his wife. Only a moment too late, the real Odette is revealed to Siegfried and he realizes the mistake he has made.

### **Act 3- Lakeside**

The swan maidens and Odette sadly gather at the lakeside knowing they are now destined to always be swans under Von Rothbart's power. Siegfried appears apologizing to Odette for being tricked by Von Rothbart. Odette accepts his apology yet tells him he must leave the lake and never return. Suddenly, Von Rothbart appears. Knowing Von Rothbart will kill Siegfried, Odette stays to defend the Prince. But Von Rothbart overpowers her and sends Siegfried over the cliff. Odette flies over the cliff to save Siegfried knowing now he is her true love. Meanwhile her swan maidens gather together to fight against Von Rothbart and overcome him. With Von Rothbart gone, the spell is magically removed as they all shed their feathers and return to their human form. Odette and Siegfried return together and can now live happily ever after.

# SWAN LAKE

A ballet in three Acts

Music by Peter Ilyich Tchaikovsky

Performed by the Springfield Symphony Orchestra

Conducted by Kyle Pickett

Choreography by Gen Horiuchi

Lighting Design by Maureen Berry

Scenery and Costumes Courtesy of BALLET WEST, Adam Skulte, Artistic Director

Scenic and Costume Design by Peter Cazalet

Costumes Supervised by Susan Erhart

## Prologue:

Young Siegfried\* Brody Frank  
Young Odette\* Samantha Storzum<sup>A</sup> Ava Phillips<sup>B</sup>  
Queen Lisa Wolfsberger  
Von Rothbart Charles Cronenwett<sup>A</sup> Sean Sessions<sup>B</sup>

## Act 1 Scene 1: Garden

Prince Siegfried Mark David Bloodgood<sup>A</sup> Michael Burke<sup>B</sup>  
Tutor Michael Monsey<sup>A</sup> Sigmund Mulnik<sup>B</sup>  
Pas de Trois Oliva Cornelius<sup>A</sup>, Zoe Middleton<sup>A</sup> and Colin Ellis<sup>A</sup>  
Juia Heiss<sup>B</sup>, Roxy Shackelford<sup>B</sup> and Fletcher Weld<sup>B</sup>  
Castle Lauren Chistensen<sup>A</sup>, Olivia Cornelius<sup>B</sup>, Emily Fugett<sup>B</sup>, Abby Hannuksela,  
Ladies Rachel Harrison, Julia Heiss<sup>A</sup>, Amy Herchenroether<sup>B</sup>, Lauren Kot, Elaine Rand<sup>A</sup>  
Castle Mark David Bloodgood<sup>B</sup>, Michael Burke<sup>A</sup>, Charlie Cronenwett<sup>B</sup>, Colin Ellis<sup>B</sup>,  
Gentlemen Miguel Guevara, Ethan Maszer, Matthew Rusk, Sean Sessions<sup>A</sup>, Fletcher Weld<sup>A</sup>  
Peasants Annie Cook, Eva Gervich, Greer Den Houter, Cecilia Draper,  
Ella Martin, Clara Wichmer  
Lead Polonaise Amy Herchenroether<sup>A</sup> Lauren Christensen<sup>A</sup>  
Queen Lisa Wolfsberger  
Queen's\* Lola Harper, Kailey Luebrecht  
Companions  
Von Rothbart Charles Cronenwett<sup>A</sup> Sean Sessions<sup>B</sup>  
Captured Swans Sydney Maddox, Juliana Barrus

## Act 1 Scene 2: The Lakeside

Odette Lori Wilson<sup>A</sup> Rebecca Cornett<sup>B</sup>  
Siegfried Mark David Bloodgood<sup>A</sup> Michael Burke<sup>B</sup>  
Hunters Charles Cronenwett<sup>B</sup>, Miguel Guevara, Ethan Maszer<sup>B</sup>,  
Sean Sessions<sup>A</sup>, Fletcher Weld<sup>A</sup>



Four Swans Olivia Cornelius<sup>B</sup>, Emily Fugett, Abby Hannuksela, Julia Heiss<sup>A</sup>,  
Lauren Kot<sup>A</sup>, Zoe Middleton<sup>B</sup>

Four Waltz Swans Lauren Christensen, Amy Herchenroether<sup>A</sup>,  
Rachel Harrison<sup>B</sup>, Elaine Rand, Roxy Shackelford

Swans Corps de Ballet  
Annie Cook, Greer Den Houter, Cecilia Draper<sup>A</sup>, Eva Gervich, Izzy Jones<sup>B</sup>,  
Liliana Lorenz<sup>A</sup>, Sydney Marsh<sup>A</sup>, Ella Martin, Cora Miller<sup>B</sup>,  
Paris Tabor-McPheron<sup>B</sup>, Clara Wichmer

## **Act 2: The Castle**

Odile Lori Wilson<sup>A</sup> Rebecca Cornett<sup>B</sup>

Prince Siegfried Mark David Bloodgood<sup>A</sup> Michael Burke<sup>B</sup>

Von Rothbart Charles Cronenwett<sup>A</sup> Sean Sessions<sup>B</sup>

Queen Lisa Wolfsberger

Tutor Michael Monsey<sup>A</sup> Sigmund Mulnik<sup>B</sup>

Four Princesses Sydney Maddox, Liliana Lorenz, Sydney Marsh, Paris Tabor-McPheron

Spanish Rachel Harrison<sup>A</sup>, Zoe Middleton<sup>A</sup> with Colin Ellis<sup>A</sup> and Fletcher Weld<sup>A</sup>  
Abby Hannuksela<sup>B</sup>, Elaine Rand<sup>B</sup> with Charles Cronenwett<sup>B</sup> and  
Fletcher Weld<sup>B</sup>

Russian Amy Herchenroether<sup>A</sup> and Sean Sessions<sup>A</sup>  
Lauren Christensen<sup>B</sup> and Matthew Rusk<sup>B</sup>

Italian Olivia Cornelius<sup>A</sup> and Ethan Maszer<sup>A</sup>  
Julia Heiss<sup>B</sup> and Colin Ellis<sup>B</sup>

Czardas Emily Fugett<sup>A</sup> and Matthew Rusk<sup>A</sup>  
Lauren Kot<sup>B</sup> and Ethan Maszer<sup>B</sup>  
with\* Julianna Barrus, Anjali Bharadwaj<sup>A</sup>, Lola Harper, Izzy Jones,  
Kailey Luebrecht, Cora Miller, Alexis Monsey<sup>B</sup>, Caitlyn Ng<sup>B</sup>,  
Grace Thomas, Ellie Tilton<sup>A</sup>, Evana Vhrovac<sup>A</sup>, Katherine Zender<sup>B</sup>

## **Act 3: The Lakeside**

Odette Lori Wilson<sup>A</sup> Rebecca Cornett<sup>B</sup>

Siegfried Mark David Bloodgood<sup>A</sup> Michael Burke<sup>B</sup>

Von Rothbart Charles Cronenwett<sup>A</sup> Sean Sessions<sup>B</sup>

Four Swans Emily Fugett, Abby Hannuksela, Julia Heiss, Lauren Kot

Four Waltz Swans Lauren Christensen, Rachel Harrison, Elaine Rand, Roxy Shackelford

Swans Corps de Ballet  
Julianna Barrus, Annie Cook, Greer Den Houter, Cecilia Draper, Liliana Lorenz,  
Sydney Maddox, Sydney Marsh, Ella Martin, Paris Tabor-McPheron

### *Cast schedule:*

*A: 4/28 at 7pm and 4/29 at 7pm*

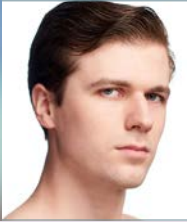
*B: 4/29 at 2:30pm and 4/30 at 2:30pm*

*\* Students courtesy of Saint Louis Ballet School*

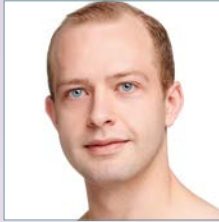
*All casting is subject to  
change due to injury or illness.*

# COMPANY DANCERS

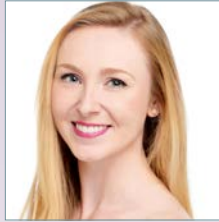
Joined 2008-2016



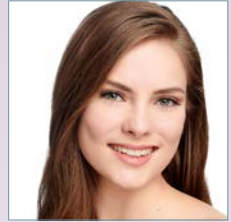
**Mark David Bloodgood**  
Seattle, WA  
Joined 2016



**Michael Burke**  
Mexico, MO  
Joined 2016



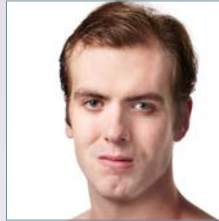
**Lauren Christensen**  
Kansas City, MO  
Joined 2013



**Rebecca Cornett**  
Simsbury, CT  
Joined 2014



**Amy Herchenroether**  
Pittsburgh, PA  
Joined 2013

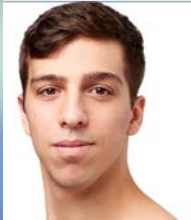


**Matthew Rusk**  
Tuscon, AR  
Joined 2016

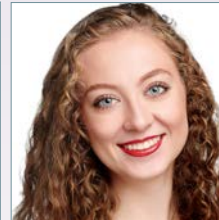


**Lori Wilson**  
Lubbock, TX  
Joined 2008

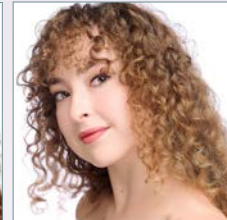
Joined 2017-2019



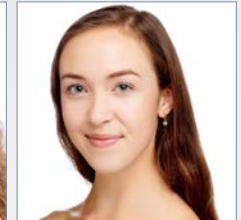
**Colin Ellis**  
McHenry, IL  
Joined 2017



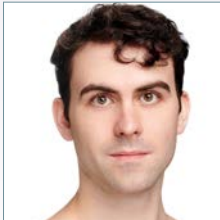
**Emily Fugett**  
Chicago, IL  
Joined 2018



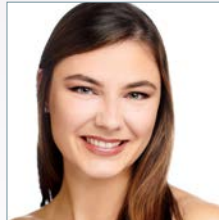
**Rachel Harrison**  
Arlington, MA  
Joined 2019



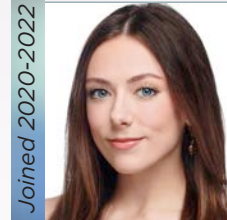
**Lauren Kot**  
Howell, MI  
Joined 2019



**Sean Sessions**  
Baltimore, MD  
Joined 2018

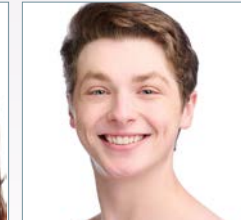


**Roxy Shackelford**  
Macon, GA  
Joined 2019



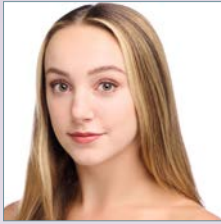
Joined 2020-2022

**Olivia Cornelius**  
Melrose, MA  
Joined 2020

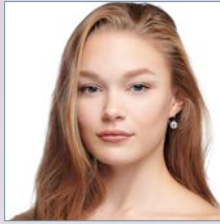


**Charles Cronenwett**  
St. Louis, MO  
Joined 2022

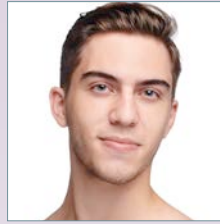
# COMPANY DANCERS



**Abby Hannuksela**  
Seattle, WA  
Joined 2022



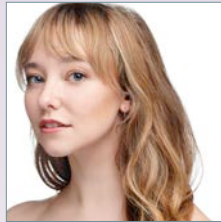
**Julia Heiss**  
Dallas, TX  
Joined 2020



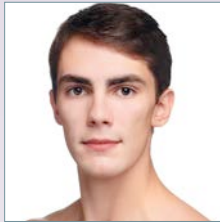
**Ethan Maszer**  
Andover, MA  
Joined 2021



**Zoe Middleton**  
Oak Park, IL  
Joined 2021



**Elaine Rand**  
West Lafayette, IN  
Joined 2020



**Fletcher Weld**  
Seattle, WA  
Joined 2021



*SLB Dancer  
Headshots by Kelly Pratt  
Learn more about the  
company members here  
<<<*

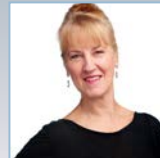
## CHARACTER ARTISTS



**Michael Monsey**  
Has appeared in  
SLB productions  
since 1988



**Sigmund Mulnik**  
Has appeared in  
SLB productions  
since 1994

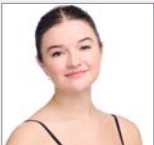


**Lisa Wolfsberger**  
A founding member  
of Saint Louis Ballet

# SAINT LOUIS BALLET TRAINEES



Juilianna Barrus



Annabelle Cook



Greer Den Houter



Cecilia Draper



Eva Gervich



Miguel Guevara



Lola Harper



Izzy Jones



Liliana Lorenz



Kailey Luebrecht



Sydney Maddox



Sydney Marsh



Ella Martin



Cora Miller



Avery Murray



Paris Tabor



Grace Thomas



Clara Wichmer



## SPRINGFIELD SYMPHONY ORCHESTRA

### **Kyle Wiley Pickett, *Conductor***

Kyle Wiley Pickett is currently in his ninth year as the Music Director and Conductor for both the Springfield Symphony Orchestra and the Topeka Symphony Orchestra. He formerly held the same posts with the Juneau Symphony and California's North State Symphony.

In 2023, Maestro Pickett made his company debut conducting the Ozarks Lyric Opera in Don Giovanni and he will make his debut in China with the Zhejiang Orchestra in Guanzhou. In 2019, Maestro Pickett made his Asian conducting debut with the Thailand Philharmonic Orchestra at the Thailand International Composition Festival. He has also recently conducted the Naples Philharmonic with the Martha Graham Dance Company, the Kansas Ballet, the Montana Ballet Company, and the City of Prague Philharmonic for an acclaimed recording. He has also appeared as a guest conductor with the University of Kansas Symphony at the Kauffman Center in Kansas City, the Guanajuato Symphony in Mexico, the York Symphony (PA), the Santa Rosa Symphony (CA), and the Bozeman Symphony (MT), among others.



A native of Los Gatos, California, Maestro Pickett holds a Bachelor's degree in music from Stanford University and a Master's degree in choral conducting from the California State University, Chico, where he studied with William Ramsey. His Doctorate of Musical Arts degree in orchestral conducting was conferred by the Peabody Conservatory in Baltimore under the direction of Frederik Prausnitz. Pickett is also an accomplished flutist whose teachers include Frances Blaisdell and Robert Willoughby. He lives in Springfield with his wife, Alice, and his two sons, Ned and Grant.



## SPRINGFIELD SYMPHONY ORCHESTRA

### VIOLIN I

David R. Hays, Concertmaster  
Pamela Davis, Assistant Concertmaster  
Timothy Daucher  
Larry Dissmore  
Kelly Owens  
Bethany Phillips  
Aleksis Zarins

### VIOLIN II

Jill Woodhouse, Principal  
Joanna Metsker, Assistant Principal  
Danyl Collins-Sallee  
Linda Hills  
Janet Hopkins  
Barbara Page

### VIOLA

Kirsten Weingartner Weiss, Principal  
Abigail Diaz, Assistant Principal  
Starla Blair  
Carla Geter  
Lisa Sinden Gottfried

### CELLO

Jacqueline Trtan, Principal  
Emilia Stauffer, Assistant Principal  
Kathy Love  
Alejandro Quiceno Garcia

### BASS

Sue Stubbs, Principal  
Riley Robison, Assistant Principal  
David Curtman

### FLUTE

Jill Heyboer, Principal  
Betsy Nace

### PICCOLO

Betsy Nace

### OBOE

Sara Renner, Principal  
Joseph Tomasso

### CLARINET

Allison Storochuk, Principal  
Larkin Sanders

### BASSOON

John Atteberry, Principal  
Brent Fillmer

### HORN

Eric Jackson, Principal  
Gary Moege  
Jeremy Ulm  
Stephanie Ruhe

### TRUMPET

Tijuana Julian, Principal  
J. Matthew White  
Jeff Nall  
Jared Brown

### TROMBONE

Robert Kehle, Principal  
Michael Stine

### BASS TROMBONE

Bob Swanson

### TUBA

Max Gerhart, Principal

### PERCUSSION

Susanna Reichling, Principal  
Richard Collister III  
Ethan Linfoot  
Tim Morton

### HARP

Maria Trevor, Principal





# Thank You!

## FAMILY OF CONTRIBUTORS

*Pictured: SLB Dancers in "ALLEGRO BRILLANTE"  
Photo by Kelly Pratt*

***Saint Louis Ballet is grateful and indebted to the many people, foundations and businesses that have supported Saint Louis Ballet.***

*April 1, 2022 - April 1, 2023*

### **Directors: \$25,000 and above**

Anonymous  
Mann Family Foundation  
Regional Arts Commission  
The Jerome Robbins Foundation

The Shubert Foundation  
United Way of Greater St. Louis  
Carol and Thomas R. Voss

### **Choreographer's Circle: \$10,000 - \$24,999**

Ameren Missouri  
Anonymous  
Dr. Anthony Baumstark  
Erin Beal  
Mark Eggert and Julie Tang

Emerson  
Greensfelder, Hemker & Gale, P.C.  
Heartland Coca-Cola  
Holman Automotive  
Dr. Elaine Majerus

Missouri Arts Council  
Jerrold Rusk  
Mary Strauss  
Patricia and Dr. Leo Whiteside

### **Répétiteur's Circle: \$5,000 - \$9,999**

Anonymous  
Chris and Jenny Bartlow  
Fox Associates, LLC  
Patrick and Susan Frangella  
Sarah and David Glasser

Lisa Finder Holland  
Lindsey and David Jones  
Dr. and Mrs. Kalwerisky  
Brooke and Dr. Brian Meek  
David Morris and Joey Neal

Novus International, Inc.  
Jeff and Sarah Oberman  
John Russell and Darryl Redhage  
Lisa and Tom Suntrup  
Miho and Koichiro Tago

### **Ballet Master: \$2,500 - \$4,999**

Bruce Arnold  
Susan Bindler  
John R. Bradbury  
Chad and Charity Brandon  
Cigna Foundation  
Michelle and Dr. Michael Curtis  
Marco Custodio  
Sara and Brian Davis  
Michael and JiaMin Dierberg

Natalie Dixon  
Marjorie and Bernard Feldman  
Don Ferguson and Maryam Haider  
Dr. Sophia Ford Glanton  
and Dr. Luveell Glanton  
Lisa and Robert Forsyth  
Tammy Ganey  
Mrs. Natalie Haynes  
Mike Isaacson

Tyler and Heather Johns  
Laurie and Sean Lock  
Annette and Dr. Randall Markarian  
Jennifer and Greg Martin  
Microsoft  
Ruth and Lawrence Miller  
Dr. Mimi Vo and Mr. Nghia Cao  
Mr. Dick Miles and Ms. Patricia Whitaker  
Kathie and Richard Winter

### **Principal: \$1,000 - \$2,499**

Christina Altholz  
Anonymous  
Cherie and Jim Arnold  
Anthony Billings  
Maria and John Billings  
Bridget May Bloodgood  
Boeing  
Mr. Justin Bridgeman  
Lisa Brubaker and Jim Viscardi  
Jason and Wendy Brumitt  
Frank Cannistraro  
Anne Christopher  
Lori and Ken Cornett  
Maryanne Hertel and Kevin Counihan  
Jennifer and Steve Davis  
Dr. Mariela Del Valle-Cruz

Elizabeth Dixon  
Dr. Cynthia Fleck and Mr. Randall Barker  
Adam Foster Fine Art Jewelry  
Laura Frank  
Dave and Veronica Grimes  
Cathie and Scott Hernandez  
Dr. Andrea Itzkowitz  
Roger Johnson  
Theresa and Peter Karutz  
Mike and Vicki Kiefer  
KPMG LLP  
Teresa LaRocco and Lyle Krehbiel  
Louise Lane  
Lisa LeMasters  
Sharon and Cliff Leve  
Krista Flowers Luebrecht

Patrick and Dr. Becky Lynn  
Kimberly McAllister  
Jennifer and Matt Morris  
Kimberly Perry  
The Phillips Family  
Erin Rachmiel  
Meg Foley and Richard Rand  
Stephanie and Anthony Randall  
Jacquelyn Kelly Schmidt  
Cori and Dr. Thomas Sehy  
St Louis Community Foundation  
Mr. and Mrs. Richard Tao  
Vivienne Topping  
Dr. Mai Vo and Dr. Giao Vuong  
John and Suzanne Wolf  
Pamela Wollenberg

**Principal Character Artist**  
**\$500 - \$999**

AbbVie  
Steven Alagna  
Anonymous  
Barbara Barenholtz and Milton Hieken  
Michael Bobroff  
Ali Breitbach  
Maria Briggs  
Bill & Jaclyn Brizzard  
Shaun Byrd  
Vivianna Carter  
Courtney Christensen  
Dorene Cipriano  
Rob and Michele Clark  
Carol and Thomas Clear  
Robin and Michael Connelly  
Don Conrad  
Sara and Tom Deckelman  
Kenneth Dobbins  
Kelly Duhigg  
Michele Eades  
Gloria and Patrick Fearon  
Margaret and Donald Franz  
Richard Fugett  
Julie Gibbs  
Leigh Ellen and Raymond Griffiths  
Donna Halliburton  
Tracy Hannuksela  
Gretchen Harrison  
Wendy Herchenroether  
Jordan Higgins  
Christine and Ross Jenkins  
Ken Jenkins  
Jerald Kevin Corder  
Jan Kosmal  
Bryan Krueger  
Linda Landendecker-Corley  
Shannon Lay  
Olga Levine  
Barbara and Michael Lock  
Drs. Susan and Dan Luedke  
Aly Maixner  
Nigel and Amy Malterer  
Judy Maul  
Stacy McRae  
Donna Middleton  
Anonymous  
Elaine Murphy  
Debra Niemann  
Michael Nolan  
Katrina Pon and Aaron Hughes  
Deborah Johnson-Provance & Michael Provance  
Mr. Joseph Pruski  
Tracy Ragsdale  
Heather and Mark Rynasiewicz  
Tara and Steve Schultz  
Robert Schwarze  
Brooke and Jon Sehy  
Heather Selsor  
Lori Shambro and Paul Louis  
Barbara and Amos Shamir  
Karen Spector  
Haley Strebler  
Brenda and Greg Teakert  
The Milford and Lee Bohm Charitable  
Foundation  
Leslie Uljee  
Fabienne Vincel  
Ann VonAllmen  
Danny Willis

**Soloist**  
**\$275 - \$499**

Sonny Ahad  
Marlene Birkman  
Julie Byrnes  
Todd Ciche  
Mandy and Sean Copenhaver  
Kelly Cubellis  
Michelle DeVillar  
Michael Feldman and Jacob Laws  
Celia Gahagan  
Alexandra Goen  
Jill Graftenreed  
Susan and Peter Herchenroether  
Catherine Hooper  
Ruth and Jerold Howsden  
Judith Koehler  
Linda Ladendecker-Corley  
Jackie and Scott Leisler  
John McConaghy  
Alisa McPherson  
Anisha Moorhead  
Mary Rose  
Jessica and Leonard O. Rosik  
Matt and Rachel Sokolich  
Jill Strong  
Renee Templeraud  
Justin and Tedd Trabert

**Corps de Ballet**  
**\$125 - \$274**

Advantage Capital  
Allstate Insurance Matching Program  
Sonja and Jack Anderson  
Kris and Mark Arneson  
Ben Bartels  
Bayer  
Joan Berkman  
Trupthy and Tripti Bharadwaj  
Dianna and Ernest Brewer  
Jeffrey Brown  
Patricia Bubash  
Catherine and James Bundschuh  
Thomas Burke  
David and Maggie Chi  
Marlene and James Clark  
Rebecca and Jeffrey Cook  
Becky Domyan  
Kathy LaRocco and Marc Ellis  
Marc Ellis  
Hillary Esser  
Mary and Lucas Fertitta  
Jacqueline Frankel  
David Ganz  
Susan Gillham  
Richard Gnecco  
Leigh Goldschmidt  
Miran and David Halen  
Sarah Hon  
Janet and David Houston  
Morgan Howard  
Carrie Hruza  
Toshiko and Shinichiro Imai  
Lauren Jenkins  
Tyler Johnson  
Martha Kaufmann  
Christine and Al Klein  
Sara Knowles  
Dan Kramer  
Michael Feldman and Jacob Laws

Fran Levine  
Patricia Lorenz  
Morath MacRae  
Piotr Mak  
Michael Marschuetz  
Mastercard Impact Fund  
Will Mattingly  
Earl N. Mayfield  
Julie Meek  
Kelsey Middleton  
Allison Miller  
Renee and Michael Monsey  
Tiffany Morris  
Isaac and Danielle Mosley  
Toni Murphy  
Charlie Nemas  
Marc and Jennifer Ozimkiewicz  
Elvira R. & G. Joseph Patrelle  
Francis J. Patrelle  
Ali Rafferty  
Erica Randall  
Stephanie Riven and Roger Goldman  
Natalie Rohlfing  
Cathy and Marcos Rothstein  
Jannette Rusch and Joseph Corbo  
Mr. & Mrs. Josh Saipe  
Raymonde and Steven Schopp  
Sean Sessions  
Ashley Smith  
Melissa Smith-Groff and Brady Groff  
Gary Solbrekken  
Kathy Svensson Sykes and Stephen Vetzner  
Bonnie and Alan Templeton  
Ms. Christy Thompson  
Odile and Fred Tompkins  
Lois Vander Waerdt  
Patricia Vogelsang  
Lance Weiss  
Jarvis Weld  
Mr. Ted Wight  
Charles Wimper  
Brandy Wise  
Jennifer Wood  
Tom Woods  
Fran Zmler

**Thank you to Madison's  
Dancewear for your contributions**



*Click below for complete lists*

**Donor  
List**

**Gifts in  
Tribute**

**DONATE  
TODAY!**

# BOARD OF DIRECTORS

## OFFICERS

Thomas R. Voss, President  
*President and CEO, Ameren (Retired)*

Gen Horiuchi  
*Executive and Artistic Director  
Saint Louis Ballet,  
Saint Louis Ballet School*

Patricia Whiteside, Vice President  
*Community Volunteer*

Christina Altholz, Treasurer  
*CFO, Variety St. Louis*

## DIRECTORS

Allison Benney  
*Area Assistant Vice President,  
Gallagher*

Sophia Ford-Glanton MD  
*Associate Medical Director,  
Evicore*

Brooke Meek  
*Founder PLNK Fitness*

Susan Bindler  
*Partner, Haar & Woods, LLP*

Sarah Glasser  
*Attorney*

Lawrence Miller, Ph.D.  
*Computer Engineer II  
Infocitex*

Jennifer A. Davis  
*Officer, Greensfelder,  
Hemker & Gale*

Natalie R Haynes  
*Partner, Ernst & Young LLP*

Amy Schwetz  
*SVP and CFO,  
Flowserve*

Bernard Feldman  
*Professor Emeritus, UMSL*

Laura E. Krebs Al-Shathir  
*Capes Sokol - Shareholder*

Carol Voss  
*Community Volunteer*

Laurie Lock  
*Community Volunteer*

# ADMINISTRATION

Executive and Artistic Director  
Director of Finance  
Director of Donor Relations  
Manager of Design and Marketing  
Development Events Coordinator  
Marketing Consultant  
Marketing Graphics Contributor  
Public Relations & Media Marketing  
Manager of Patron & Donor Services  
Grants Writer  
Management Consultant

Gen Horiuchi  
Julie Abernathie  
Nancy Jatcko  
Tanya Strautmann  
Mary Cady  
Nancy Goldstein  
Anna Sher  
Cindy Lander Wallach, SAGE Marketing  
Ryan Mak  
Sabrena Nelson  
John Cattanach

# PRODUCTION

Director of Stage Productions  
Lighting Director  
Wardrobe Director  
Wardrobe Assistant  
Photography/Video/Social Media  
Physical Therapist and Athletic Trainer  
Chiropractor  
Backstage Coordinator

Amy Soll  
Maureen Berry  
Susan Erhart  
Eadaoin Erhart  
Kelly Pratt, Pratt + Kreidich Photography  
Bryan Lind, Athleticco  
Joseph R. Sturges, D.C.  
Catherine Bundschuh

# ST. LOUIS BALLET SCHOOL

Directors  
Associate Administrators

Gen Horiuchi and Tanya Strautmann  
Heather Grahn-Howard,  
Emma Kovacs, Ryan Mak  
Sarah Masterson, Jennifer Morris

Children Production Parent Leaders

*Thank you to all our volunteers for your dedication to Saint Louis Ballet performances and to our organization.*





# **ATHLETICO**

**PHYSICAL THERAPY**

## **In Pain? Start Here.**

**Our therapists can transform your pain before it progresses to something worse. Start with physical therapy and the results are game-changing.**

---

**Request a Free Assessment\***

---

**Official Provider of  
Physical Therapy**

**SAINT LOUIS BALLET**

***athletico.com***

**877-ATHLETICO (284-5384)**

\*Per federal guidelines, beneficiaries of plans such as Medicare, Medicaid, Tricare, VHA and other federally funded plans are not eligible for free assessments.

# Help us spread the joy of ballet to everyone in our city!

*Last December Saint Louis Ballet provided over 200 tickets and transportation for two local Title 1 Schools to attend The Nutcracker.*

**Pointe to Succeed** supplies free performance tickets and bus transportation to the theater for Title I schools.

Continuing this program is essential to bringing ballet and performing arts to our young community members.

**Will you support their ballet tickets?**

