

SAINT LOUIS **BALLET**



The Grandel Theatre

May 17, 2025

GEN HORIUCHI & SAINT LOUIS **BALLET**

25 *Years and counting...*
26



SECURE YOUR SEASON SUBSCRIPTION!

- On sale May 8 at 10am
- Subscribers save 20%
- No service fees if ordered by May 31
- Great seats available in all sections!
- Options as low as \$88-accessible to all!

CURRENT SUBSCRIBERS*

Renew early beginning April 28 at 10am

**Current subscribers: We will email your access for renewal.*

SUBSCRIPTION BENEFITS:

- 3 Shows Included
Take 5 More or Less Fall Series
Call It Love! Winter Series
Cinderella Spring Series
- First choice of seats and 10% discount to **THE NUTCRACKER** until May 31!
- Pay no service fees if you order by May 31
- Exchange Privileges
- Early Access to Additional Tickets

*Cinderella
Returns!*

LEARN MORE AT
STLOUISBALLET.ORG

MetroTix



SAINT LOUIS **BALLET**

EXECUTIVE AND ARTISTIC DIRECTOR

Gen Horiuchi

THE COMPANY

Michael Burke Lauren Christensen Jared Cordova Olivia Cornelius
Rebecca Cornett Colin Ellis Emily Fugett Miguel Guevara
Abby Hannuksela Julia Heiss Amy Herchenroether Lauren Kot
Ethan Maszer Logan McIntosh Zoe Middleton Elaine Rand
Roxy Rudin Matthew Rusk Sean Sessions Gwen Vandenhoeck
Fletcher Weld Lori Wilson

SECOND COMPANY

Magnolia Chesney Annabelle Cook Amelia Erich Ava Schandlbauer

Rehearsal Director

CiCi Houston Sudholt

Assistant Rehearsal Director

Christine Settembrino

Teaching Associates

Angela Cassidy Liz Lloyd Louise Nadeau Christine O'Neal
Donna Patzius Lisa Wolfsberger

Cover photo SLB Dancers Julia Heiss and Colin Ellis, photo by Kelly Pratt

Special thanks to the following season sponsors:

THE
SHUBERT
FOUNDATION INC.

Mary Strauss



VOSS FAMILY
FOUNDATION

THE
JEROME
ROBBINS
FOUNDATION



NOVUS
INTERNATIONAL, INC.

ATHLETICO
PHYSICAL THERAPY

Missouri Arts Council
The State of the Arts

THE **DIRECTOR**



GEN HORIUCHI

Executive and Artistic Director

Gen Horiuchi, originally from Tokyo, Japan, moved to the United States after winning the Prix de Lausanne, the international ballet competition in Switzerland in 1980, and receiving a scholarship to study at the School of American Ballet. In 1982, the great George Balanchine invited him to join the New York City Ballet, where he became a principal dancer in 1989. He performed many ballets

with the renowned company; Balanchine created the role of Mercury in the ballet *Perséphone* especially for him. Peter Martins, ballet master-in-chief, created ballets *Eight More* and *Les Gentilhommes* for Horiuchi as well.

Gen Horiuchi's Broadway musical credits include Andrew Lloyd Webber's *Song and Dance* and the role of Mr. Mistoffelees in *Cats*. He went on to perform that role in London's production of *Cats* and became the first performer to play the lead on both Broadway and in the West End in 1998. That same year, he choreographed the magnificent Opening Ceremony of the Winter Olympics in Nagano, Japan.

Horiuchi became Executive and Artistic Director of Saint Louis Ballet in 2000 and created more than 20 original works including seven full-length ballets for the company.

In 2010, he founded "Ballet for the Future" which tours Japan's major cities each summer with a company of professional ballet dancers. In 2016, the Japanese Ministry of Education, Culture, Sports, Science and Technology awarded Horiuchi the prestigious Art Encouragement Prize in recognition of his work with "Ballet for the Future."

SAINT LOUIS **BALLET**

LE REVE

Music by Joseph Morra
Choreography by Gen Horiuchi
Lighting by Maureen Berry
Costumes by Nada Darandari

LORI WILSON FLETCHER WELD

LAUREN CHRISTENSEN, ANNABELLE COOK, AMELIA ERICH,
JULIA HEISS, AMY HERCHENROETHER, LAUREN KOT,
ELAINE RAND, ROXY RUDIN, AVA SCHANDLBAUER

JARED CORDOVA, MIGUEL GUEVARA,
LOGAN MCINTOSH, SEAN SESSIONS

THE NEST

Music by Sergei Rachmaninoff
Preludes for Piano, Op. 3, No. 2, Op. 23, Nos. 4, 7, and 5
Choreography by CiCi Houston Sudholt
Lighting by Maureen Berry
Costumes by Lauren Cram and Barbara Daniszewski

CLARA WICHMER* COLIN ELLIS

CAELEIGH BRAME*, HANNAH DRAGAN*, SHYANNE DURRENBERGER*,
ADA GOUSE*, ALEXANDRA GRACE*, ISABEL KOONTZ*,
REESE LONGHINI*, ELLA MARTIN*, ASPEN ROSS*,
ANA SCHRECK*, SAVANNAH SEALE*, KATHERINE ZENDER*

* = Saint Louis Ballet Trainees

A NIGHT TO REMEMBER: PROM 1962

Music by Booker T. & the M.G.'s
Choreography by Christine Settembrino
Lighting by Maureen Berry
Costumes by Lauren Cram and Barbara Daniszewski

Can't Be Still

FULL CAST

Soul Dressing

EVA GERVICH* AND MIGUEL GUEVARA

Green Onions

GRACE BROWN* AND ETHAN MASZER

Gimme Some Lovin'

GRACE THOMAS* WITH VALENTINA CARLINI*, ELEANOR FAUL*,
ALEXANDRA MORAN*, JULIANA WITIUK*

Behave Yourself

RYANN TUCKER* AND LOGAN MCINTOSH

Soul Limbo

FULL CAST

INTERMISSION

* = Saint Louis Ballet Trainees

LAS FLORES

Music by Arturo Marquez

Fandango III: Fandanguito and Danzon No. 2

Choreography by Danielle Diniz

Lighting by Maureen Berry

Costumes by Lauren Cram and Barbara Daniszewski

ZOE MIDDLETON AND MATTHEW RUSK

OLIVIA CORNELIUS AND ETHAN MASZER

JULIA HEISS AND MICHAEL BURKE

Corps de ballet

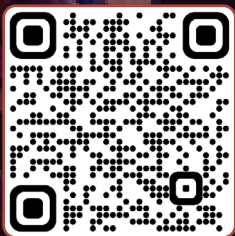
AMELIA ERICH AND MIGUEL GUEVARA

ABBY HANNUKSELA AND SEAN SESSIONS

EMILY FUGETT AND COLIN ELLIS

Keep the music aLIVE

Invest in continuing live music for ballet performances like "FEELS LIKE BROADWAY", just performed at the Touhill April 25-27.



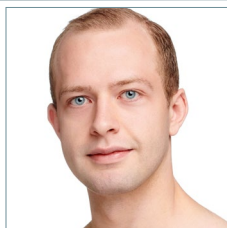
DONATE HERE

Give Annually. Give Monthly. Tribute Gifts. Corporate Matching Gifts.

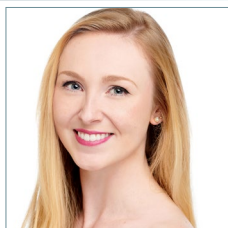


**View
Donor
List**

SLB Dancers in Christopher Wheeldon's
"CAROUSEL A DANCE",
Photo by Kelly Pratt



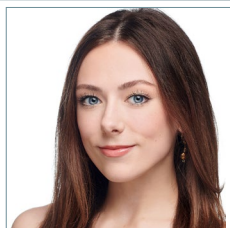
Michael Burke
Mexico, MO
Joined 2016



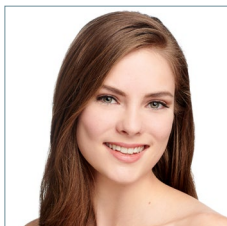
Lauren Christensen
Kansas City, MO
Joined 2013



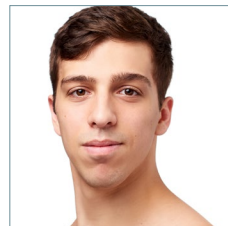
Jared Cordova
Houston, TX
Joined 2024



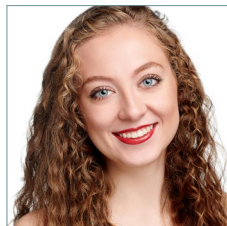
Olivia Cornelius
Melrose, MA
Joined 2020



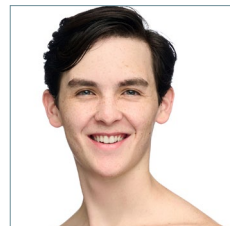
Rebecca Cornett
Simsbury, CT
Joined 2014



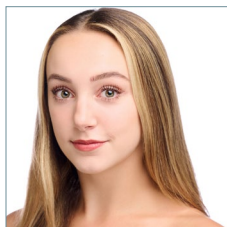
Colin Ellis
McHenry, IL
Joined 2017



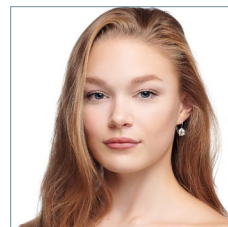
Emily Fugett
Chicago, IL
Joined 2018



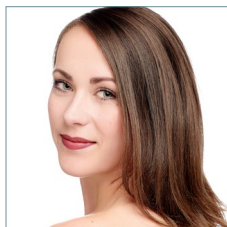
Miguel Guevara
St. Louis, MO
Joined 2024



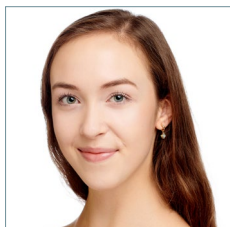
Abby Hannuksela
Seattle, WA
Joined 2022



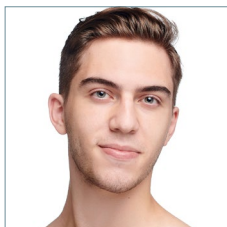
Julia Heiss
Dallas, TX
Joined 2020



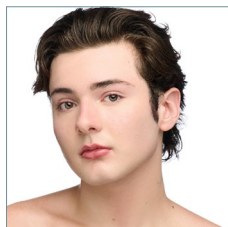
Amy Herchenroether
Pittsburgh, PA
Joined 2013



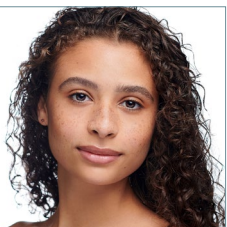
Lauren Kot
Howell, MI
Joined 2019



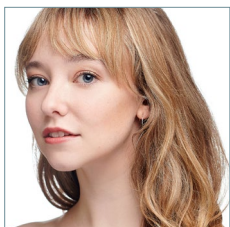
Ethan Maszer
Andover, MA
Joined 2021



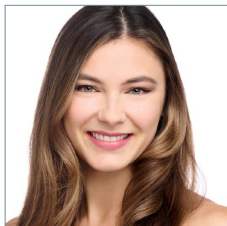
Logan McIntosh
Akron, OH
Joined 2024



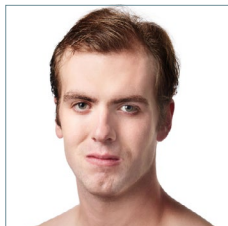
Zoe Middleton
Oak Park, IL
Joined 2021



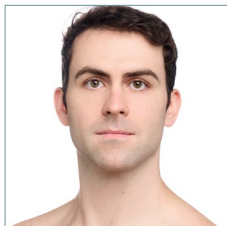
Elaine Rand
West Lafayette, IN
Joined 2020



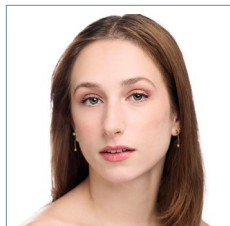
Roxy Shackelford
Macon, GA
Joined 2019



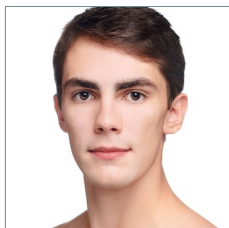
Matthew Rusk
Tucson, AZ
Joined 2016



Sean Sessions
Baltimore, MD
Joined 2018



Gwen Vandenhoeck
Brooklyn NY
Joined 2023



Fletcher Weld
Seattle, WA
Joined 2021



Lori Wilson
Lubbock, TX
Joined 2008



SLB Dancer
Headshots by Kelly Pratt
Learn more about the
company members here
<<<

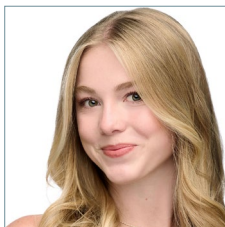
SECOND COMPANY



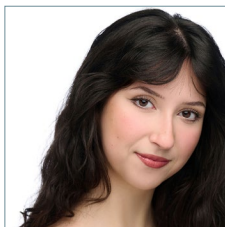
Magnolia Chesney
Oak Park, IL
Joined 2024



Annabelle Cook
Kansas City, MO
Joined 2024



Amelia Erich
Manhattan Beach, CA
Joined 2024



Ava Schandlbauer
Washington D.C.
Joined 2024

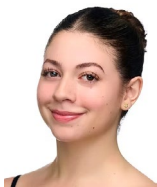
THE TRAINEES



Caeleigh Brame



Grace Brown



Valentina Carlini



Hannah Dragan



Shyanne Durrenberger



Eleanor Faul



Eva Gervich



Ada Gouse



Alexandra Grace



Isabel Koontz



Reese Longhini



Ella Martin



Alexandra Moran



Aspen Rose



Ana Schreck



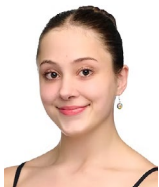
Savannah Seale



Grace Thomas



Ryann Tucker



Clara Wichmer



Juliana Witiuk



Katherine Zender

THE **CHOREOGRAPHERS**



DANIELLE DINIZ

"Las Flores" Choreographer

Danielle recently completed her time as Artist in Residence at Tribeca BMCC via CUNY Dance Initiative for the 2022/2023 season, fully choreographing and directing her own evening of repertory. This past spring she choreographed 'My Way' at Theatre by the Sea and became Associate Artistic Director of Jazz Choreography Enterprises. She is choreographing for the Ailey BFA program and New York Dance Project this fall as well as St. Paul's ballet program in the winter of 2024 and Ballet Hartford in the spring.

She has been commissioned to create new works for Jacob's Pillow, Performance Santa Fe, Avant Chamber Ballet, Columbia Ballet Collaborative, Stars of American Ballet, Ballet Hartford, Woman in Motion, Ballet Excel Ohio, Central Utah Ballet, Earl Mosley's Diversity of Dance and the Jamaica Center for Arts and Learning.

She was a featured choreographer for DanceBreak (musical theater's leading platform for upcoming Broadway choreographers), made her Off-Broadway choreographic debut at the AMT Theatre with 'An Unbalanced Mind,' presented work at the McCallum Theatre/Palm Desert Choreography Festival and the New York Theatre Barn Choreography Lab held at Baryshnikov Arts Center and was awarded a grant from the New York Foundation for the Arts/City Artist Corps to present a full evening of her choreography.

She is a winner of the New York Dance Project Choreography Competition, a junior board member of Jazz Choreography Enterprises and a choreographic mentor for We Are Queens. She also choreographed the AEA production of the Vaudevillian musical 'On the Air,' currently choreographs and assistant directs intermittent musical theater showcases at The American Musical and Dramatic Academy and has served as Associate Choreographer for Lorin Latarro. She is on faculty at Kanyok Arts Initiative and Manhattan Youth Ballet and also enjoys teaching for Steps on Broadway, Mark Morris and Peridance.

Danielle has a B.A. in English (concentration in Shakespearean Studies, minor in Dance) from Cornell University.

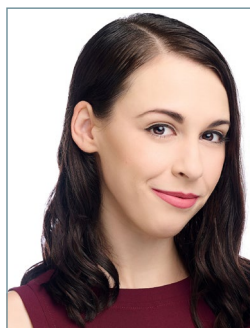


CICI HOUSTON SUDHOLT
Rehearsal Director

"The Nest" Choreographer

Houston Sudholt rejoined Saint Louis Ballet in 2015, when she was given the position of Rehearsal Director and Director of Education and Outreach. Originally from Detroit, she received her training from Theresa Crawford, Central Pennsylvania Youth Ballet, and the Virginia School of the Arts under the direction of Petrus Bosman

and David Keener. A former company dancer with SLB, Houston Sudholt performed featured roles in ballets by numerous choreographers including George Balanchine, Gen Horiuchi, and Francis Patrelle, and performed as a guest artist internationally. A teacher since 1998, Houston Sudholt served at Alexandra Ballet for 12 years as teacher, choreographer, member of the Board of Directors, eventually earning the title of Co-Artistic Director and Director for Regional Dance America, Midstates region. A member of the SLB School teaching staff, she also travels as a guest teacher and choreographer for pre-professional companies nationwide. As Rehearsal Director for SLB, Houston Sudholt rehearses repertoire, stages existing works, and works closely with guest choreographers and répétiteurs. This is her fifth original ballet created for Saint Louis Ballet.



CHRISTINE SETTEMBRINO
Assistant Rehearsal Director

"A Night To Remember: Prom 1962" Choreographer

Christine Settembrino is an alumna of Princeton Ballet School's Professional Training Program and the University of Cincinnati's College-Conservatory of Music (CCM). During her ten-year performance career, she danced with Dayton Ballet, Terpsicorps Theatre of Dance, Albany Berkshire Ballet, Birmingham Ballet, Missouri Contemporary Ballet (now Mareck Dance), and Deos Contemporary Ballet.

Ballet (now Mareck Dance), and Deos Contemporary Ballet.

Ms. Settembrino's performances highlights include Kitri in Don Quixote, Lilac Fairy and Princess Florine in The Sleeping Beauty, Sugar Plum Fairy in The Nutcracker, Fouetté Girl in Graduation Ball, Salvatore Aiello's Afternoon of a Faun, and works by Dwight Rhoden, Thang Dao, Ben Needham-Wood, Anthony Krutzkamp, Tess Sinke, and Steve Rooks.

Ms. Settembrino joined St. Louis Ballet in 2022 as Assistant Rehearsal Director under the leadership of Artistic and Executive Director Gen Horiuchi, where she has also choreographed three works for the company's New & Next series. She is also the Rehearsal Director for Deos Contemporary Ballet's summer season, where she has often restaged the works of the Artistic Director, Tess Sinke. Additionally, Ms. Settembrino has directed and choreographed full-length productions of Cinderella and Giselle and a one-act production of The Dream for DaySpring Arts & Education.

ADMINISTRATION



JULIE ABERNATHY, Director of Finance

Abernathy has over 25 years of experience in accounting and finance. She has been the director of finance for Saint Louis Ballet Company and School since 2008. She has a bachelor's degree in accounting with a minor in French from Southeast Missouri State University, successfully completed the CPA exam, and recently obtained her master's degree in accounting from Indiana Wesleyan University. She held the position of assistant controller at Wave Technologies, a training company. She has loved the arts since youth, when she studied dance, clarinet and piano in the St. Louis area.



TANYA STRAUTMANN, Director of Marketing

As a former principal dancer of Saint Louis Ballet, Strautmänn is dedicated to the guidance of SLB dancers, the ballet repertoire and the company's image in the community as expressed in graphics and online media. She graduated from Lindenwood University with a bachelor's degree in fine arts emphasizing web design and administration while continuing to dance professionally with Saint Louis Ballet. She performed lead roles in Giselle, Romeo and Juliet, and Swan Lake, among others. She guest performed for Toledo Ballet and in Japan for Gen Horiuchi's "Ballet for the Future." She retired from performing in 2014. In addition to her company duties, she serves as co-director for Saint Louis Ballet School.



LIZ LLOYD, Company Manager

Originally from North Carolina, Lloyd joined Saint Louis Ballet as a company dancer in 2014. While dancing with the company she had the pleasure of performing works by notable choreographers such as Gen Horiuchi, George Balanchine, Christopher Wheeldon, and others. Lloyd received her bachelor's degree in English with a focus in Communications from Washington University in St. Louis in 2022. Graduating with final honors, she is a member of Alpha Sigma Lambda, and is the recipient of the Dean's Award for Academic Excellence, an award given for highest grade point average. After retiring from her career as a dancer in 2022, she spent one year working as a Project Manager in New Product Development in New York City. She returned to Saint Louis in 2023 to accept the position of Company Manager with Saint Louis Ballet. She is also on the faculty of Saint Louis Ballet School.

SEANA BEARD, Manager of Ticketing and Patron Services

Seana Beard's entertainment career began over 20 years ago in St. Louis. She got her feet wet at the Fabulous Fox Theatre where she managed box office sales for touring concerts and Broadway shows. She has since dedicated a majority of her career to ticketing and event sales. She traded the Broadway scene, for the big top when she joined Circus Flora for their traditional yearly summer show. There she spent 16 years as the Director of Ticketing and Sales, where she not only focused on growing the attendance and revenue, but enhancing the patron and donor experience as well. Her exceptional contributions to this organization earned her the Explore St. Louis Hero of Hospitality Award in 2019. In recent years she has been connected with nonprofit arts organizations throughout the St. Louis area providing strategic assistance with sales, patron services, and donor stewardship.

PRODUCTION

MAUREEN BERRY, Lighting Design

Maureen Berry has been designing lighting for Saint Louis Ballet since 2012. Maureen received her Master of Fine Arts degree in Lighting Design in the School of Theatre, Television, and Film from San Diego State University in 2008 and received her Bachelor of Arts degree in Lighting Design and Technical Theatre from The University of California Santa Cruz in 2004. Maureen has designed lighting for theatre, dance, opera, concert, and television, and currently designs for many companies around the Saint Louis area.

EVANGELINE WHITLOCK, Production Stage Manager

Evangeline returns to Saint Louis Ballet after working with the company this past Nutcracker season. She has worked on and off Broadway, in regional theatres across the country, on international and national tours, with ballet and contemporary dance companies, and on large-scale corporate and industrial events. She has worked with the St. Louis Rep, the Muny, and facilitates a weekly summer theatre program with L'Arche St. Louis. She is the head of the stage management program at the Sargent Conservatory of Theatre Arts at Webster University.

LAUREN CRAM, Wardrobe Manager

Lauren Cram, a St. Louis native, was entranced with dance of all kinds growing up—performing on a competitive level and semi-professionally into adulthood with a growing appreciation for the costumes that enabled her to get into character. Expanding her love of the arts with fashion design, Cram has sold her designs and participated in various fashion shows across the country, manages an online fabric shop, resells stunning vintage treasures, and instructs youth fashion design classes at COCA, where she most recently costumed a production of Mean Girls. Thrilled to be combining her big three loves—design, dance, and SEQUINS—the multifaceted Cram is excited to be a part of Saint Louis Ballet.

BARBARA DANISZEWSKI, Wardrobe Manager

Barbara Daniszewski comes to Saint Louis Ballet with eight years of experience as a professional costumer and over 25 years experience costuming ballets. A former ballet dancer and ballet teacher, she understands the importance of freedom of movement in a costume, while enhancing the visual effect of the dance. She is thrilled to be a part of the Saint Louis Ballet Production team.

SLB CONSULTANTS

NANCY GOLDSTEIN (Marketing)

Nancy N. Goldstein has been a writer, television producer and marketing consultant for more than 35 years both in Saint Louis and on the West Coast. A graduate of Medill School of Journalism at Northwestern and Stanford, she has marketed for-profit and not-for-profit organizations and was instrumental in the growth of COCA in her role as marketing director/consultant for more than 20 years. She loves working with arts organizations in the areas of strategy, branding, advertising and public relations.

CINDY LANDER WALLACH (Public Relations, SAGE MARKETING)

Cindy Lander is the president of SAGE Marketing. The firm she founded was voted one of the best marketing and PR firms in the St. Louis area. Cindy has more than 30 years of experience working with some of the area's leading organizations. She is well respected by media professionals throughout the country who have relied on her and her team to provide creative story ideas, as well as credible sources for timely news stories. SAGE Marketing excels in the strategic planning and creative execution of comprehensive marketing and public relations programs.

JOHN CATTANACH (Management)

John Cattanach recently founded Resilient Office Solutions as a consulting firm to help non-profit and arts organizations strengthen their business practices to position them for growth. Prior to this endeavor, John had a 30-year career in the arts that spanned design work, technical work, and arts management. Most recently, John was the Managing Director of the Touhill Performing Arts Center at the University of Missouri-St. Louis. Over his twelve-year tenure as director, he helped shape the Touhill into a professional resource dedicated to serving the University, the non-profit community, and the entertainment industry.

SAINT LOUIS BALLET



SUMMER 2025



JUNE ADVANCED GUEST TEACHER: ***LOUISE NADEAU***

SUMMER INTENSIVES

June 16 – July 18

Ages 7 and up

Beginner through Advanced

STORYBOOK CAMPS

June 16 – July 18

Ages 3-6

The Nutcracker

Wicked

The Sleeping Beauty

Frozen

**REGISTER
TODAY!**



BOARD OF DIRECTORS

OFFICERS

Thomas R. Voss, President
President and CEO, Ameren (Retired)

Patricia Whiteside, Vice President
Community Volunteer

Gen Horiuchi
*Executive and Artistic Director
Saint Louis Ballet, Saint Louis Ballet School*

Christina Altholz, Treasurer
CFO, Variety St. Louis

DIRECTORS

Allison Clifton
*Director of Insurance
MTM Health*

Jennifer A. Davis
*Officer, Greensfelder,
Hemker & Gale*

Natalie Dixon
*Engineering Manager
Boeing*

Dr. Bernard Feldman
Professor Emeritus, UMSL

Lisa Forsyth
Community Volunteer

Natalie R Haynes
Partner, Ernst & Young LLP

Laura E. Krebs Al-Shathir
Capes Sokol - Shareholder

Laurie Lock
*Philanthropic Strategy and
Management Advisor; Educator*

Lawrence Miller, Ph.D.
*Software Engineer III
Tapestry Solutions, a Boeing
Subsidiary*

Amy Schwetz
*Senior Vice President/
Chief Financial Officer
Flowserve*

Karen Spector
*Executive Assistant/Board
Coordinator
Ranken Jordan Pediatric
Bridge Hospital*

Erin VanTrease
VP, Product, Tacony Corp.

Ann VonAllmen
*Sustainable Interior
Architect*

Carol Voss
Community Volunteer

Thomas B. Weaver
Attorney

ADMINISTRATION

Executive and Artistic Director
Director of Finance
Director of Donor Relations
Company Manager
Director of Marketing
Marketing Consultant
Public Relations & Media Marketing
Manager of Ticketing and Patron Services
Grants Writer
Management Consultant

Gen Horiuchi
Julie Abernathy
Nancy Jatcko
Liz Lloyd
Tanya Strautmann
Nancy Goldstein
Cindy Lander Wallach, SAGE Marketing
Seana Beard
Laura Schlereth
John Cattanach

PRODUCTION

Production State Manager
Lighting Director
Wardrobe Directors
Photography/Video/Social Media
Physical Therapist and Athletic Trainer
Chiropractor
Backstage Coordinator

Evangeline Whitlock
Maureen Berry
Lauren Cram and Barbara Daniszewski
Pratt + Kreidich Photography
Bryan Lind, Athletico
Joseph R. Sturges, D.C.
Catherine Bundschuh

ST. LOUIS BALLET SCHOOL

Directors
Administrator
Associate Administrators

Gen Horiuchi and Tanya Strautmann
Heather Grahn-Howard
Emma Kovacs, Brittney Bartlett

Thank you to all our volunteers for your dedication to Saint Louis Ballet performances and to our organization.

ATHLETICO

PHYSICAL THERAPY

Turn Your Setbacks into Comebacks

Are aches, pains, or injuries holding you back? Our team is here to help you get back to doing what you love.

Start with a Free Assessment*

Scan Here



Official Provider of
Physical Therapy

SAINT
LOUIS
BALLET

*Per federal guidelines, beneficiaries of plans such as Medicare, Medicaid, Tricare, VHA and other federally funded plans are not eligible for free assessments.

877-ATHLETICO (284-5384)

